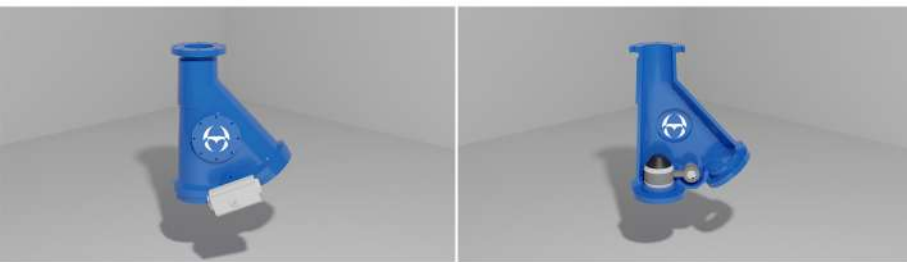
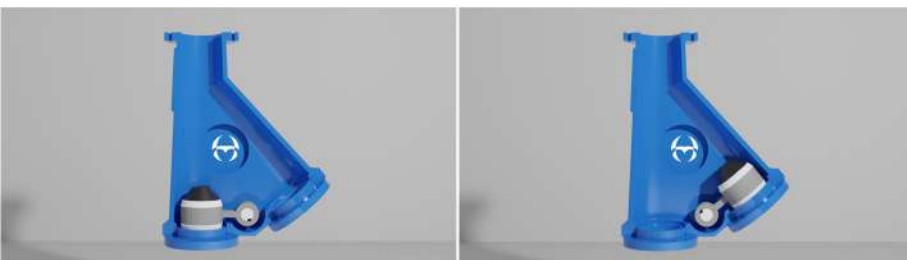


## FEATURES

- When a material needs to be transported to multiple outlets such as silos, vessels etc.
- Flow control and directing in pipe circuits.
- Ideal for applications where there is a need to switch between multiple pumps, filters etc.
- When space is limited for extensive piping and/or larger valve can't be utilized.
- Vertical and horizontal installation available.
- Eliminates obstruction of downstream lines.
- Equipped with position switches (Automation system integration).



- High sealing efficiency (no leakage).
- Few number of components ensures low maintenance.
- 40° diverting angle.
- Operating pressure up to 6 barg.
- Standard designs can handle temperatures up to 80°C.
- Optional high temperature designs are available up to 180°C.
- No external moving components.



Outlets Configuration



- Designed to direct flow from an inlet to one of two outlets (and vice versa; can be utilized as a converging valve).

Compliance	
CE*	Compatible with CE (2006/42/EC) and (2014/35/EU)*

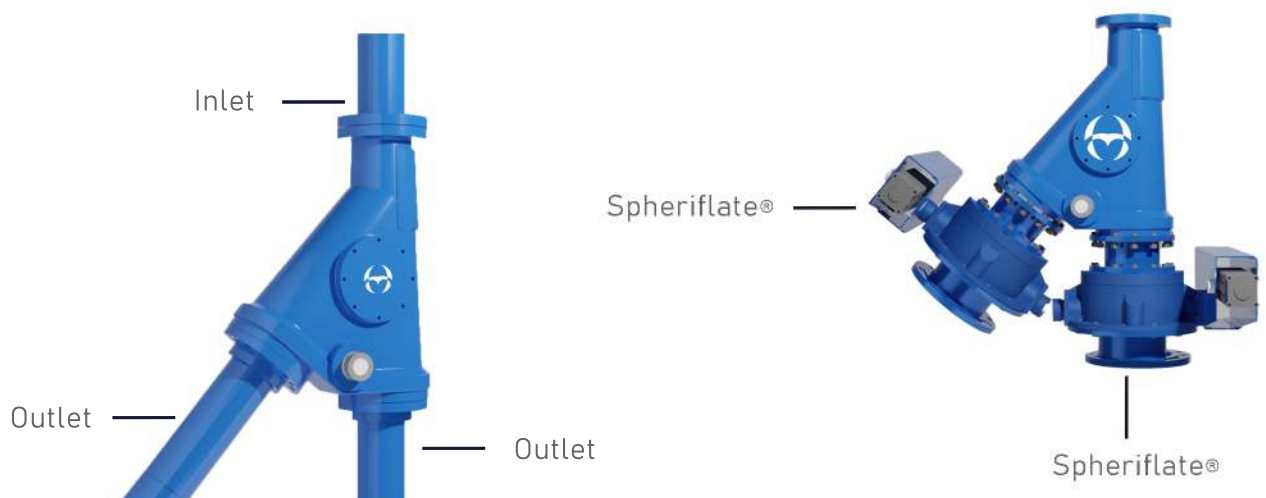
Technical Properties	
Operating Temperature	Up to 180°C
Operating Pressure	6 barg
Size	2" - 6"
Diverting Angle	40°
Flange	PN16
Usage	Vertical/Horizontal
Control	Pneumatic Actuator with Solenoid Valve and Position Switch

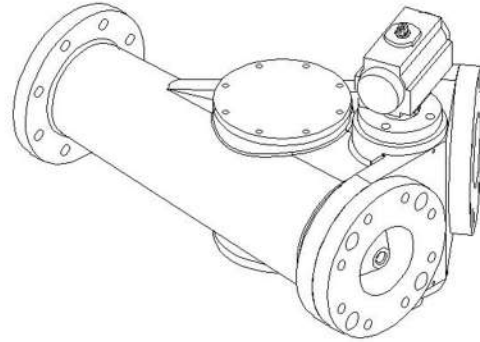
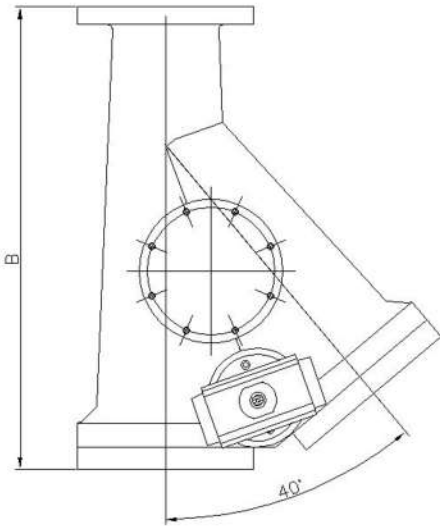
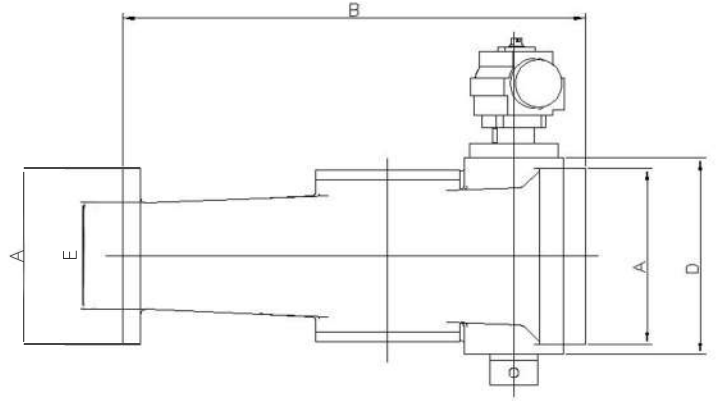
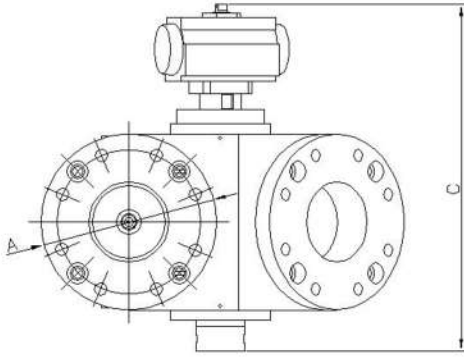
Materials		
Body	Standard	Gray Cast Iron
	Optional	Stainless Steel Cast
Seal	Standard	Rubber
		Silicon

- Ideal for powder and granular materials.
- Reduces dead spaces in conveying lines to a minimum.
- Material is able to flow freely due to special design which doesn't have any cavities, unnecessary spaces or dead areas for the material to get stuck and build up.



- Regular process flow goes through one side of the valve while one is kept closed. When an irregularity or problem occurs, the process side is closed and the dump side is opened.
- Maintenance can be done without disconnecting the valve from the pipeline (in-place maintenance).
- Options available for construction material for handling of abrasive materials.
- Configurations with Spheriflate® available in all sizes.
- Models DIV200/ DIV300/ DIV400 must be equipped with Spheriflate®s.
- Versatile.
- Functional.
- Durable.
- Heavy Duty.





Models	Dimensions				
	A*	B	C	D	E
DIV50	165	425	362	190	70
DIV80	220	550	433	245	132
DIV100	220	550	433	245	132
DIV125	250	678	527	280	158
DIV150	285	810	647	330	191